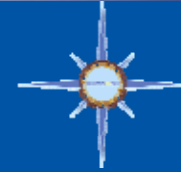




MATTOUSH EXCEPTIONAL URANIUM PROJECT



September, 2010



FORWARD LOOKING STATEMENTS

This presentation contains certain "Forward Looking Statements", including but not limited to statements regarding the Company's overall objectives and strategic plans, work programs, exploration budgets and targets and mineral resources estimates. Forward Looking Statements express, at the date of this presentation, the Company's plans, expectations, estimates and beliefs as to future events or results. Forward Looking Statements involve a number of risks, many of which are beyond the Company's control, and there can be no assurance that such statements will prove to be accurate.

Therefore, actual results and future events could differ materially from those anticipated in such statements. Risks and uncertainties that could cause results or future events to differ materially from current expectations expressed or implied by the Forward Looking Statements include, but are not limited to, factors associated with fluctuations in the market price of precious metals, mining industry risks and hazards, uncertainty as to estimation of mining resources and other risks related to the activities of the mining industry. The reader is cautioned not to place undue reliance on these Forward Looking Statements.



5 REASONS TO INVEST IN STRATECO

1. QUALIFIED MANAGEMENT

- One of the 4 companies in Canada which have been qualified by the CNSC.

2. MATOUSH HAS ONE OF THE HIGHEST URANIUM GRADE OUTSIDE ATHABASCA

- Grade is King in mining.

3. EXPLORATION POTENTIAL – OBJECTIVE TO REACH + 60M POUNDS

- Major drilling program – 120,000 metres over next 24 months.

4. BUY RECOMMENDATION BY 4 SENIOR ANALYSTS

- Macquarie, Dundee, Haywood, Laurentian Bank

5. AGGRESSIVE INVESTOR RELATION PROGRAM

- Hired Renmark Financial Communications
- New Scoping study report
- Drilling results flow
- Public Hearing



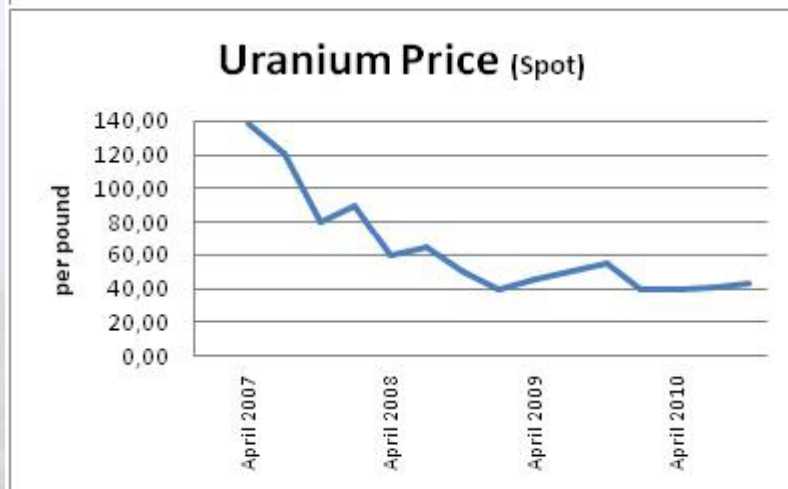
CORPORATE OVERVIEW

Share Capital Structure

Recent Share Price	\$0.50
Market Capitalization	\$62 million
Options	4.3 million
Warrants	8.3 million (price \$1.00 - \$1.05)
Management Ownership	5%
Shares Outstanding	123 million Convertible notes: 16,578,000 Unsecured and bearing no interest
52 Weeks High / Low	\$1.12 / 0.46
Working Capital	\$14 million

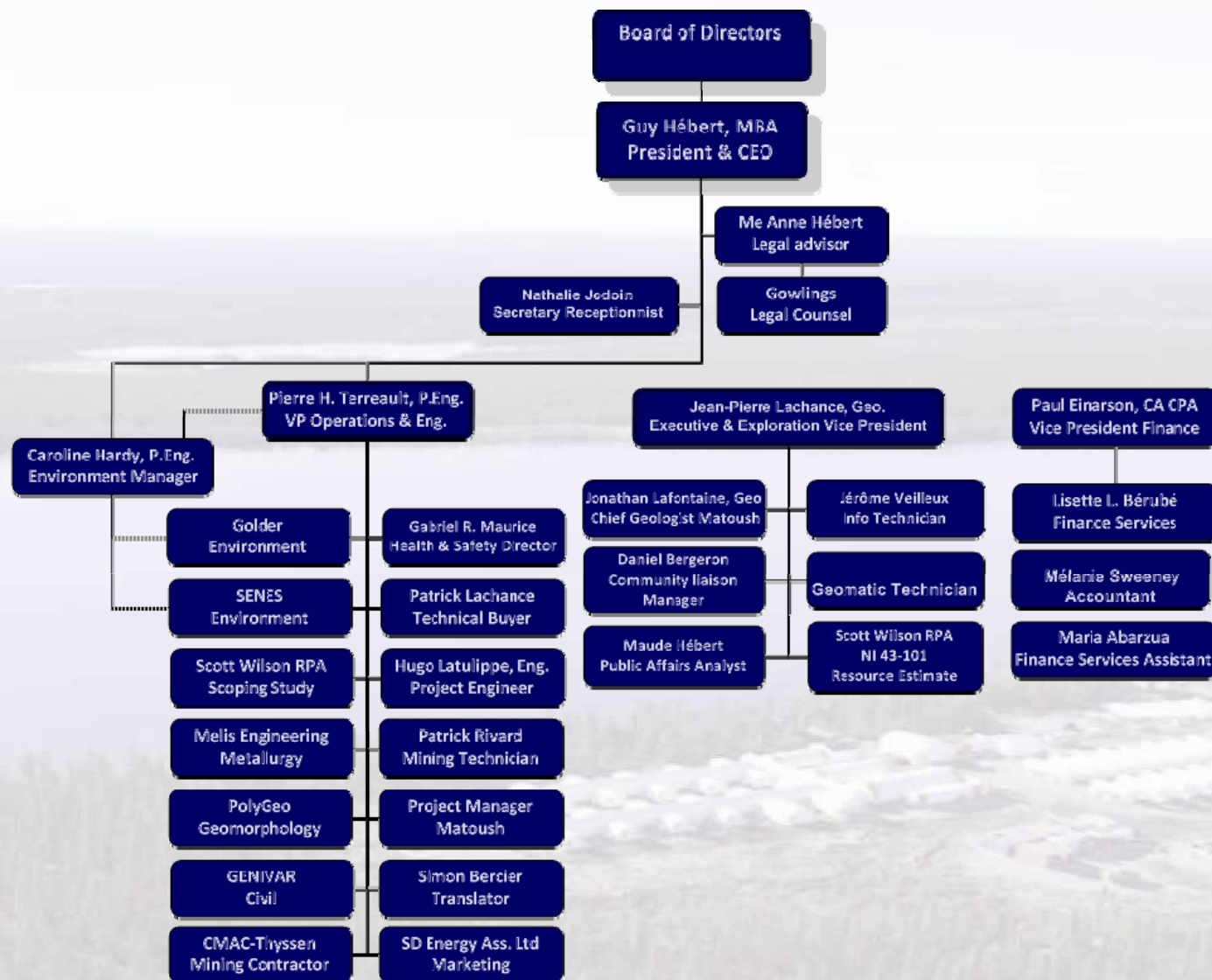


STOCK AND URANIUM PRICE CHARTS





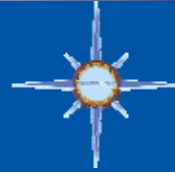
ORGANIZATIONAL CHART



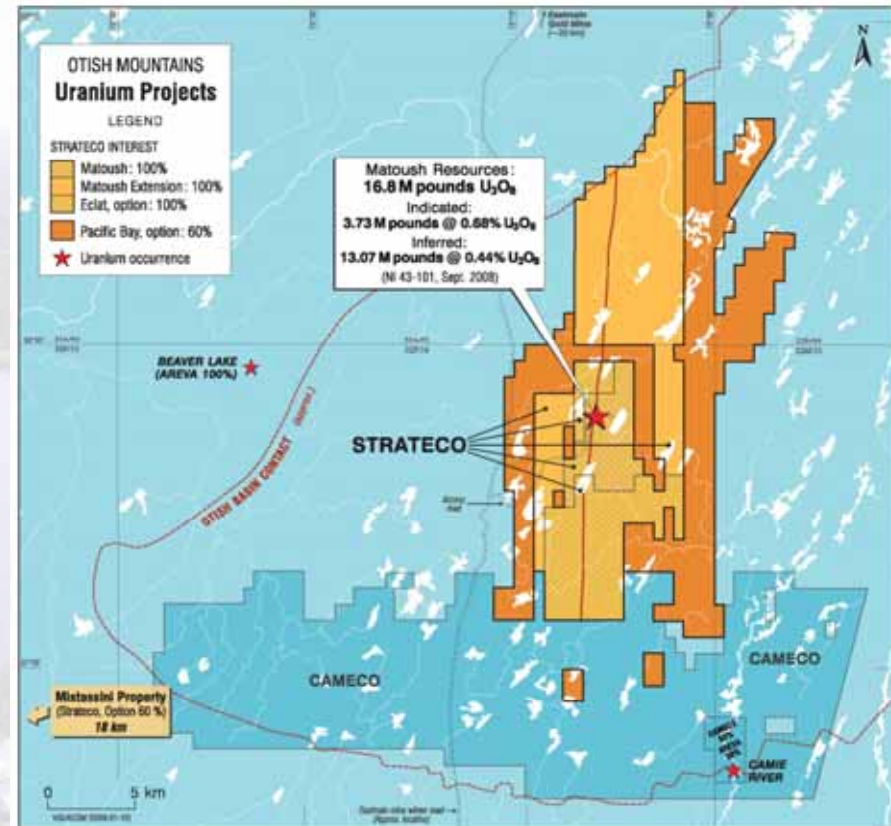


PROJECT LOCATIONS





- Property covers 312 km², 25 km strike length. Matoush structure VLF and drilling defined over 10 km.
- The new NI 43-101 resource estimate completed in September 2009 shows a 100% increase in indicated mineral resources in 1 year and significant increase in grade at Matoush.
- Indicated Resources are estimated to total 436,000 tonnes grading 0.78% U₃O₈ containing 7.46 million pounds U₃O₈. Inferred Resources are estimated to total 1.16 million tonnes grading 0.50% U₃O₈ containing 12.78 million pounds U₃O₈. The Mineral Resources are contained within three zones: AM-15, MT-22 and MT-34.
- Next 2 years, 120,000 metres of surface drilling to delineate a potential 60 M pounds.





MATOUSH MINERAL RESOURCES

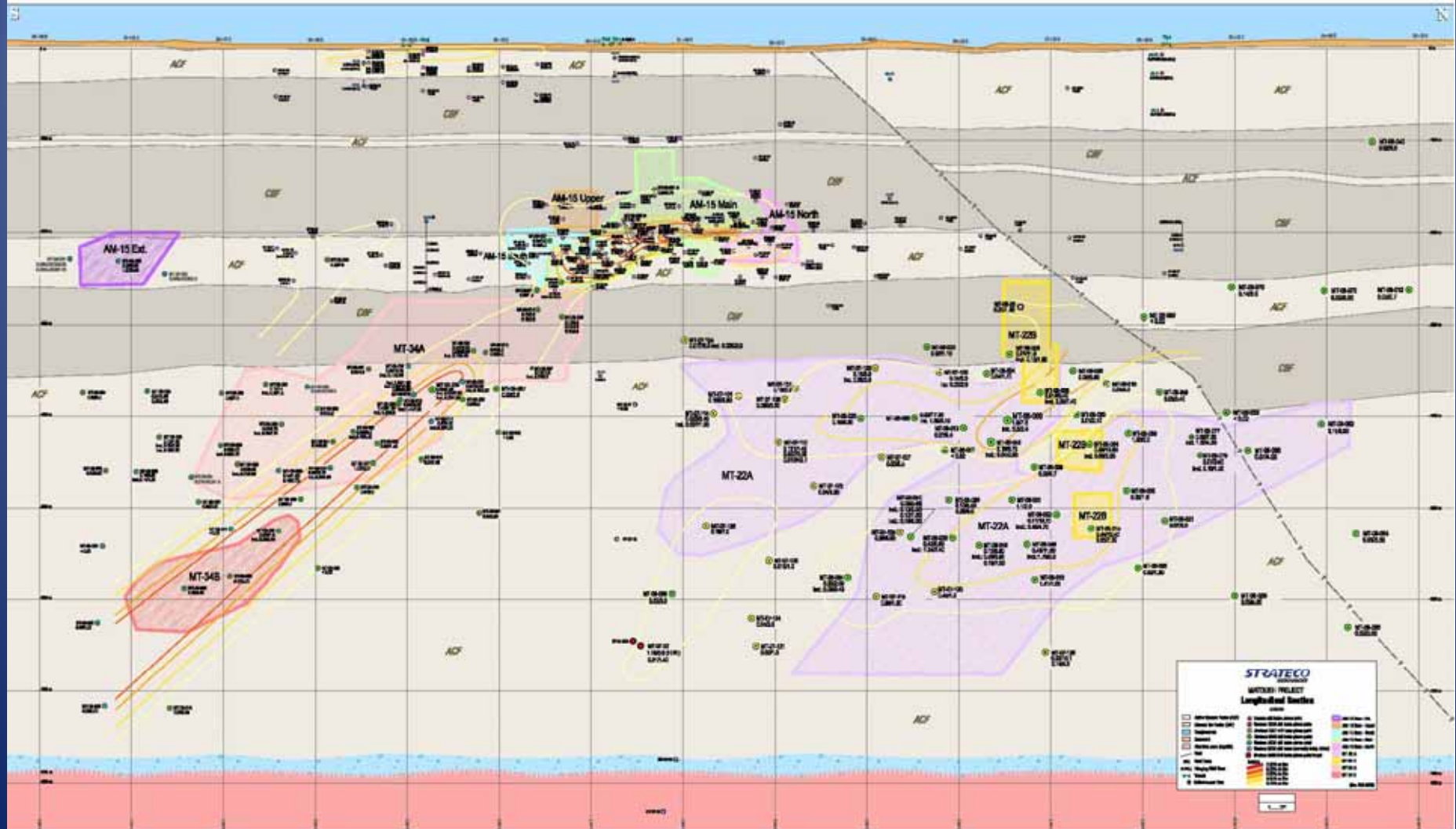
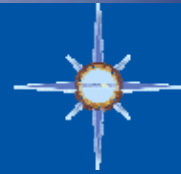
	Tonnes (x 1,000)	Grade (% U ₃ O ₈)	Pounds U ₃ O ₈ (x 1,000)
INDICATED			
AM-15	262	0.70	4,039
MT-34	174	0.89	3,420
TOTAL INDICATED	436	0.78	7,458
INFERRED			
AM-15	33	0.34	249
MT-22	822	0.53	9,526
MT-34	302	0.45	3,003
TOTAL INFERRED	1,157	0.50	12,777

Notes :

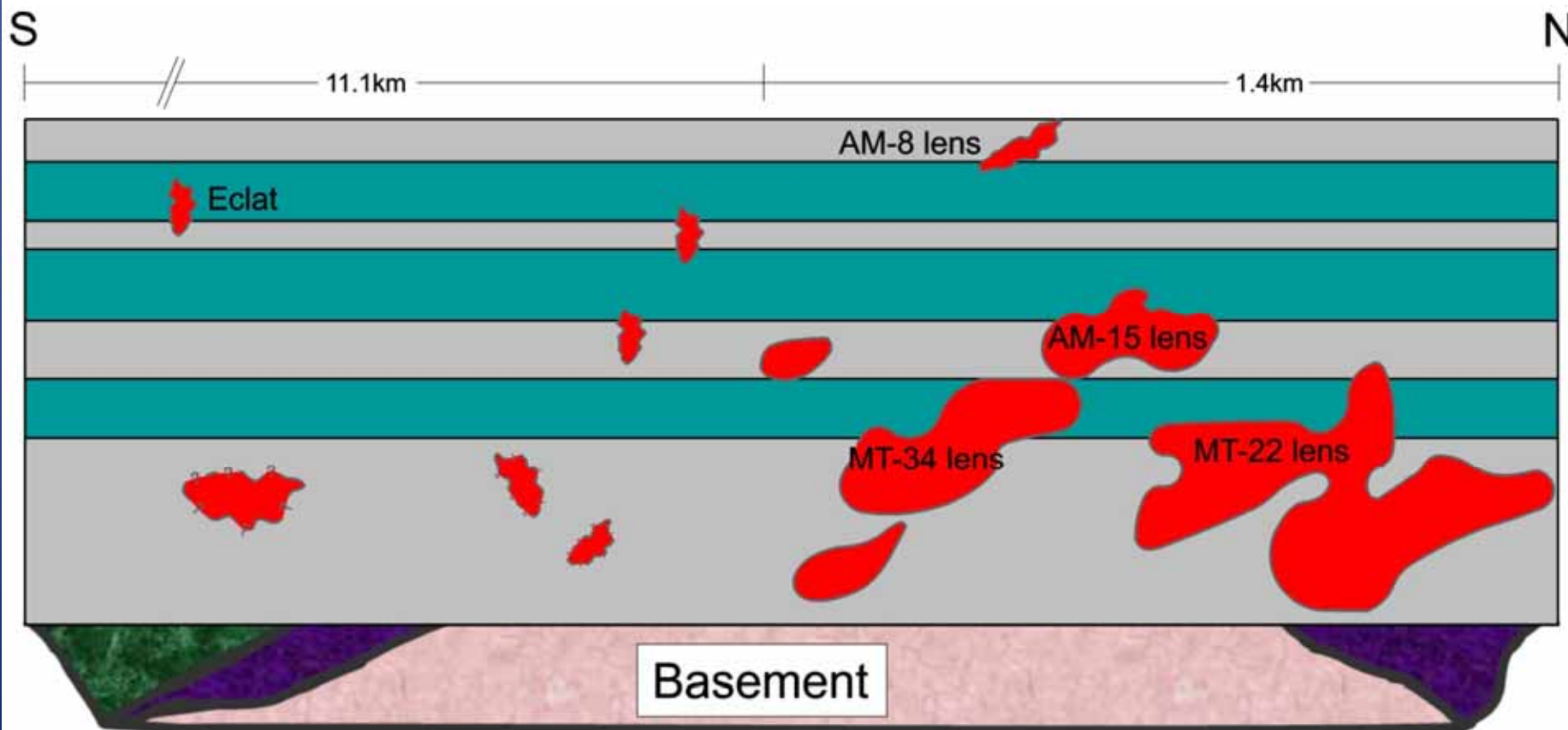
September 2009
Scott Wilson RPA

1. CIM Definition Standards have been followed for classification of Mineral Resources.
2. The cut-off grade of 0.1 % U₃O₈ was estimated using a U₃O₈ price of US\$75/lb and assumed operating costs.
3. High U₃O₈ grades were cut to 9%.
4. The Mineral Resource estimate uses drill hole data available as of September 1, 2009.
5. Mineral Resources are not Mineral Reserves and do not have demonstrated economic viability.
6. Totals may not sum correctly due to rounding.

MATOUSSH LONGITUDINAL SECTION



MATOUSH LONGITUDINAL SECTION (schematic view)





SCOPING STUDY

1. ORE PRODUCTION AND RECOVERED METAL

FEBRUARY 2010

Year	Mill Feed (x 1,000) Tonnes	Grade % U ₃ O ₈	Recovered Metal 97.6% (x 1,000 pounds) U ₃ O ₈
1	169.8	0.639	2,334
2	240.6	0.400	2,073
3	262.7	0.461	2,605
4	262.2	0.522	2,947
5	249.5	0.561	3,011
6	224.1	0.496	2,392
7	239.6	0.468	2,413
TOTAL	1,648.6	0.501	17,775

2. REVENUE

The price scenario was established by SD Energy with a long term price from US\$60.00 to US\$90.00 per pound U₃O₈ over the life of the project with an evaluation price of US\$75.00 per pound U₃O₈.

The exchange rate US\$/CAN\$ is 0.85.

Transport to smelter in North America is \$0.10 per pound.

Royalty 2%.

	(X 1,000) CAN\$
Gross Revenue	1,568,363
Transport to smelter	1,777
Royalty	31,332
NSR Gross Revenue after the Royalty	1,535,253



SCOPING STUDY

3. OPERATING COSTS

Mining	\$91.64/T milled	Maintenance	\$24.86/T milled
Process	\$92.74/T milled	Site services	\$32.68/T milled
Power (generators)	\$35.77/T milled	G&A	\$22.43/T milled
Average Operating Cost: \$300.12/T milled			
CAN\$27.84/pound		US\$23.66/pound	

4. OPERATING PROFIT

Year	(x 1,000) CAN\$	Year	(x 1,000) CAN\$
1	131,819	5	189,170
2	107,096	6	136,345
3	153,437	7	139,824
4	182,793		
Total Operating Profit: CAN\$1,040,484,000			

* The scoping study is preliminary in nature, it includes inferred mineral resources that are considered too speculative geologically to have the economic considerations applied to them that would enable them to be categorized as mineral reserves, and there is no certainty that the preliminary assessment will be realized.

* Mineral resources that are not mineral reserves do not have demonstrated economic viability.



SCOPING STUDY

5. CAPITAL COSTS

	(x 1,000 CAN\$)	(x 1,000 CAN\$)
Direct Capital Costs		191,009
Mine	32,466	
Process	143,146	
Infrastructure	15,398	
Indirect Capital Costs		48,568
Contingency		52,273
Capital Spare		980
Before Start Up		292,830
Sustaining Capital (6 years)		19,126
Closure		30,000
Mine Life Capital Costs		341,955

6. FINANCIAL

**Internal Rate of Return
before Tax: 41.5%**

NET PRESENT VALUE (NPV) before Tax	
Discount Rate %	(x 1,000 CAN\$)
5	475,550
8	377,640
10	323,530
15	218,070



SENSITIVITY

Grade	% U3O8	NPV
	0.501 %	\$ 323,530
0.80	0.401%	\$ 148,460
0.90	0.451%	\$ 235,990
1.00	0.501%	\$ 323,530
1.10	0.551%	\$ 411,060
1.20	0.601%	\$ 498,600

Opex	Millions	NPV
	\$ 494,800	\$ 323,530
0.80	\$ 395,800	\$ 380,480
0.90	\$ 445,300	\$ 352,000
1.00	\$ 494,800	\$ 323,530
1.10	\$ 544,200	\$ 295,050
1.20	\$ 593,700	\$ 266,580

Price	US\$/lb	NPV
	75.00	\$ 323,530
0.67	50.00	\$ 31,700
0.80	60.00	\$ 148,260
1.00	75.00	\$ 323,530
1.07	80.00	\$ 381,890
1.14	85.50	\$ 446,220

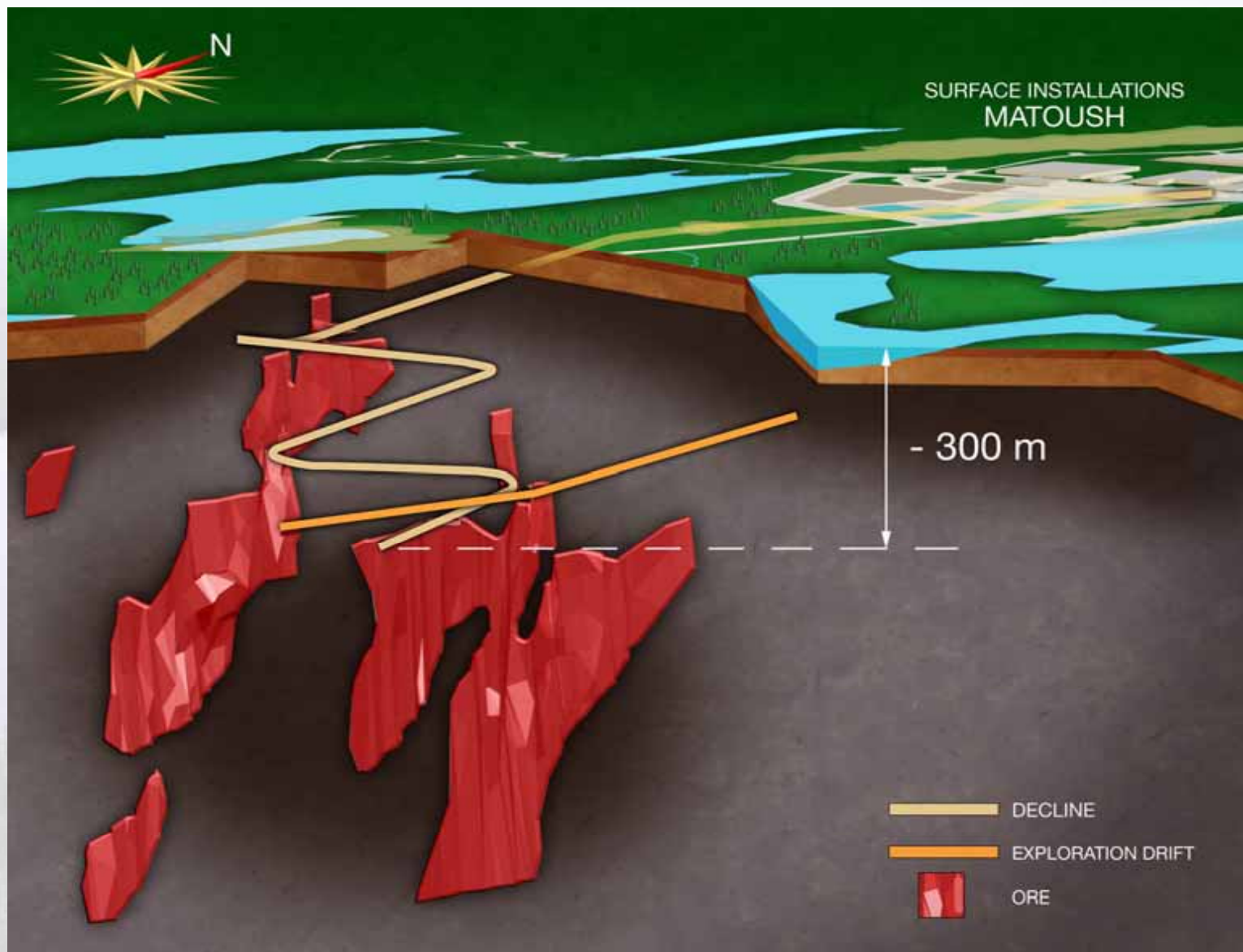
Capex	Millions	NPV
	\$ 342,000	\$ 323,530
0.80	\$ 273,600	\$ 376,950
0.90	\$ 307,800	\$ 350,240
1.00	\$ 342,000	\$ 323,530
1.10	\$ 376,200	\$ 296,820
1.20	\$ 410,300	\$ 270,110

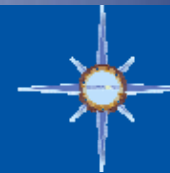


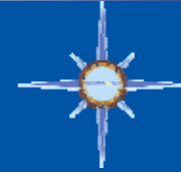
URANIUM PRODUCERS

Companies	Production (million pounds)		Shares outstanding	Share price	Market Cap (x 1,000 \$)	Average Production Costs
	2008	2009				
Denison Mines (DML)	1.6	1.3 to 1.5	339 720 000	\$1.54	522,000	\$65/lbs
Paladin Energy (PDN)	1.7	2.7	717 000 000	\$3.70	3,650,000	\$25/lbs
Uranium One (UUU)	2.9	3.5	704 000 000	\$3.45	2,429,000	\$20/lbs

PROPOSED RAMP DESIGN

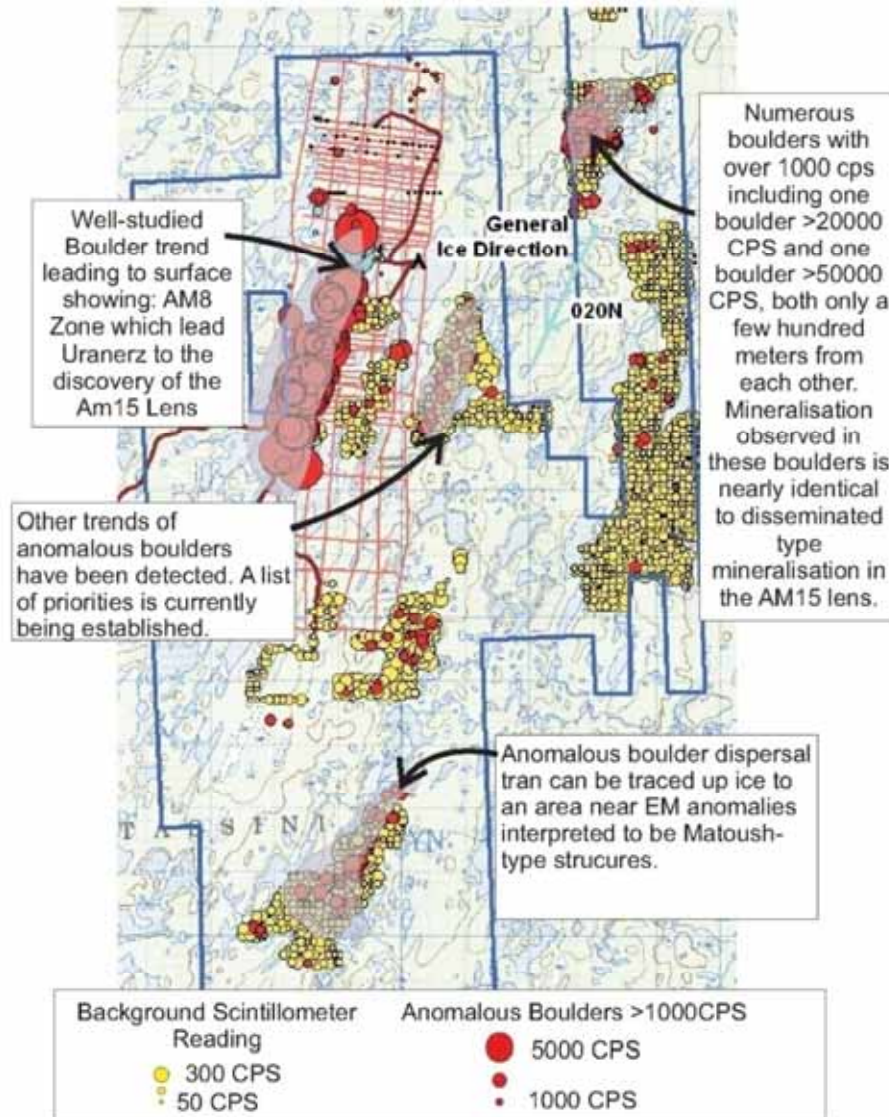






EXPLORATION POTENTIAL & EROSION

Matoush South : Exploration and Prospecting



LIST OF ENVIRONMENTAL STUDIES & PROGRAMS



**ENVIRONMENTAL
BASELINE STUDY**

- Archeology
- Aquatic
- Hydrology
- Wildlife
- Vegetation and Soil
- Surface Water and Sediment Quality
- Air and Climate
- Communication and Consultation
- Ecological Risk Assessment
- Human Health Risk Assessment
- Radiation

**ENVIRONMENTAL
RAMP STUDY**

- Hydrogeology Study
- Geochemistry
- Development Ramp Water Treatment Plant
- Waste Water Plant
- Technological Risk Assessment

COMPLETED

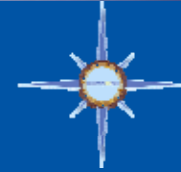
STRATECO

- Environmental Emergency Plan
- Environmental Protection Program
- Development Ramp Water and Final Effluent Monitoring Program
- Drinking Water Sampling Program
- Runoff Water Monitoring Program
- Waste Management Program
- Surface Water and Sediment Monitoring Program
- Aquatic Biota Monitoring Program
- Air Monitoring Program



LIST OF HEALTH & SAFETY DOCUMENTS

PROGRAMS	PROCEDURES	FORMS
ALARA	In Case of Accidents	Health and Safety Meeting
Quality Assurance	Radioprotection Measures	First Aid <ul style="list-style-type: none"> • Health Team • First Responder • First Aider • First Aid Kit Verification • Evacuation by Air of an Injured
Employee Communications	Sampling	Event Notification
Training	Fire and Forest Fire	Health at Work <ul style="list-style-type: none"> • Summary Health Assessment • Medical Prescription • Observation and Evolution Notes • Consent on Influenza Vaccin • Narcotics Follow-up • Treatment Refusal • Etc.
Industrial Hygiene	Prospection	Thermoluminescent Dosimeter – Radioactivity <ul style="list-style-type: none"> • Information on Ionizing Radiation (before exposure) • Personal Information Form – Dosimeter – Radioactivity • Personal Exposure Report
Emergency Measures	Satellite Calls	Authorization to Gather, Communicate and Use Personal Data
Radioprotection	General Rules of the Camp's installations	
Relations with the Community	COMPLETED	
Health at Work		
Safety at Work		
Industrial Security		
Documentation Management		



PROJECT SCHEDULE

Strateco Resources Inc.	Matoush project
-------------------------	-----------------

2009 — 2014 Project Schedule		2009				2010				2011		2012		2013		2014	
Description	Activities	Q1	Q2	Q3	Q4	Q1	Q2	Q3	Q4	H1	H2	H1	H2	H1	H2	H1	H2
Exploration/Geology	Surface Drilling	■	■	■	■	■	■	■	■	■	■	■	■	■	■	■	■
	Geological Modeling & Resource Estimation			Rev.				Rev.		Rev.		Rev.		Rev.		Rev.	
	Underground Drilling												■	■	■	■	■
Management & Studies	Project Description																
	Exploration Ramp Design	■	■														
	Scoping Study							Rev.									
	Permitting	■	■	■	■	■	■	■	■			■	■	■	■		
	Feasibility Study										■	■	■				
Exploration Ramp Infrastructure	Access Road									■	■						
	Surface Installations									■							
Development & Construction	Portal and Exploration Ramp							■	■	■	■	■	■				
	lateral Development											■	■				
	Production Ramp														■	■	■
	Infrastructure Construction														■	■	■
	Process Mill Construction													■	■	■	
Production	Commissioning & Start-Up															■	■

Q Quart H Half

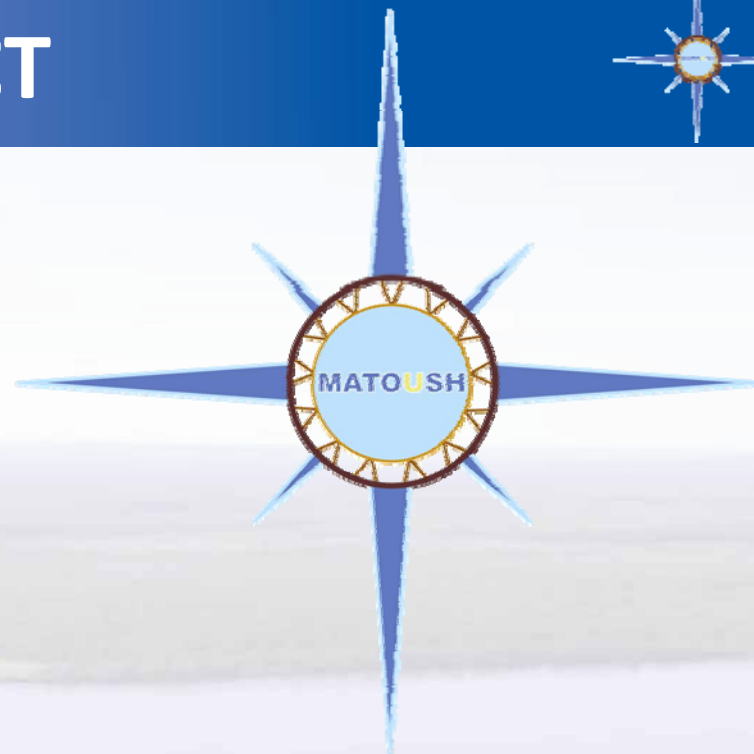


SUMMARY

TO BE SUCCESSFUL IN ANY INVESTMENT

1. **STRONG MANAGEMENT**
2. **EXCELLENT PROJECT**
3. **AGGRESSIVE INVESTOR RELATION PROGRAM**

THIS IS STRATECO RESOURCES (RSC)



Website: www.stratecoinc.com

Toll Free: 1-866-774-7722

Telephone: 1-450-641-0775

Fax: 1-450-641-1601

Address: 1225 Gay-Lussac Street
Boucherville, Quebec J4B 7K1
CANADA