



# **Annual and Special Meeting of Shareholders**

May 27, 2010



# FORWARD LOOKING STATEMENTS

This presentation contains certain "Forward Looking Statements", including but not limited to statements regarding the Company's overall objectives and strategic plans, work programs, exploration budgets and targets and mineral resources estimates. Forward Looking Statements express, at the date of this presentation, the Company's plans, expectations, estimates and beliefs as to future events or results. Forward Looking Statements involve a number of risks, many of which are beyond the Company's control, and there can be no assurance that such statements will prove to be accurate. Therefore, actual results and future events could differ materially from those anticipated in such statements. Risks and uncertainties that could cause results or future events to differ materially from current expectations expressed or implied by the Forward Looking Statements include, but are not limited to, factors associated with fluctuations in the market price of precious metals, mining industry risks and hazards, uncertainty as to estimation of mining resources and other risks related to the activities of the mining industry. The reader is cautioned not to place undue reliance on these Forward Looking Statements.



# 5 REASONS TO INVEST IN STRATECO

## 1. QUALIFIED MANAGEMENT

- One of the 4 companies in Canada which have been qualified by the CNSC.

## 2. MATOUSH HAS ONE OF THE HIGHEST URANIUM GRADE OUTSIDE ATHABASCA

- Grade is King in mining.

## 3. EXPLORATION POTENTIAL – OBJECTIVE TO REACH + 60M POUNDS

- Major drilling program – 120,000 metres over next 24 months.

## 4. BUY RECOMMENDATION BY 4 SENIOR ANALYSTS

- Macquarie, Dundee, Haywood, Laurentian Bank

## 5. AGGRESSIVE INVESTOR RELATION PROGRAM

- Hired Renmark Financial Communications
- New Scoping study report
- Drilling results flow
- Public Hearing



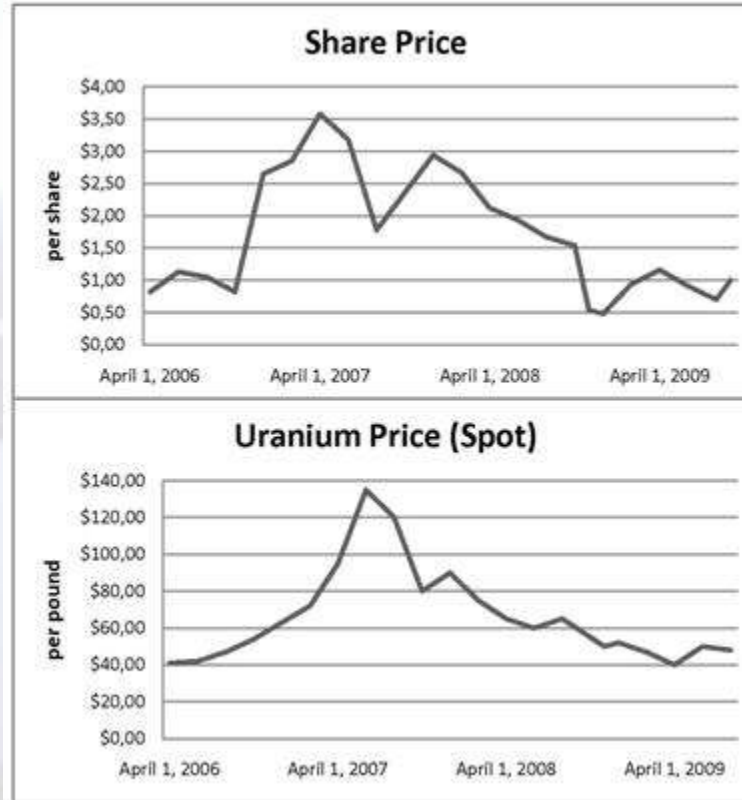
# CORPORATE OVERVIEW

## Share Capital Structure

Recent Share Price	\$0. 60
Market Capitalization	\$74 million
Options	4.3 million
Warrants	8.3 million (price \$1.00 - \$1.05)
Management Ownership	5%
Shares Outstanding	123 million Convertible notes: 16,578,000 Unsecured and bearing no interest
52 Weeks High / Low	\$1.25 / 0.57
Working Capital	\$18 million

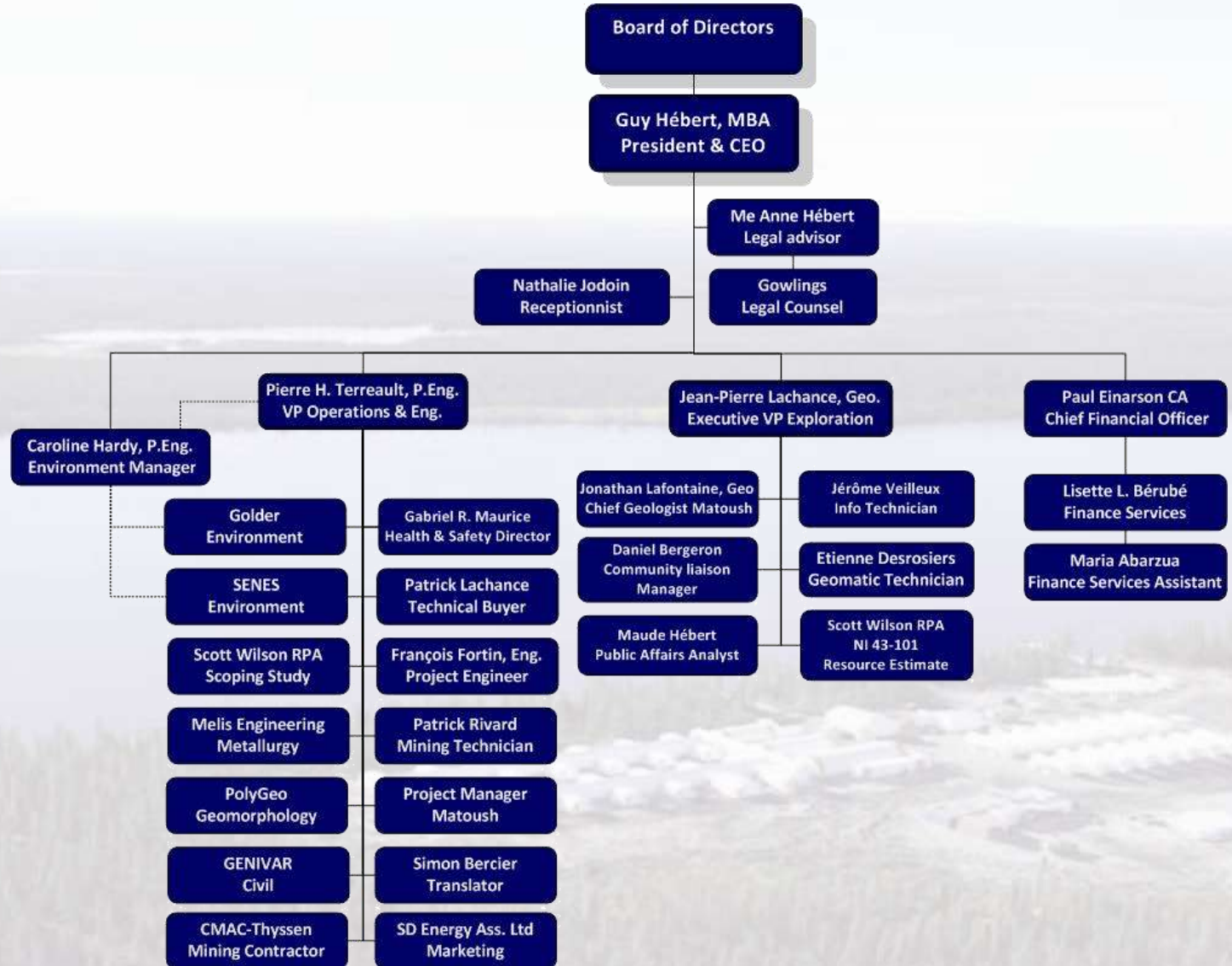


# STOCK AND URANIUM PRICE CHARTS





# ORGANIZATIONAL CHART



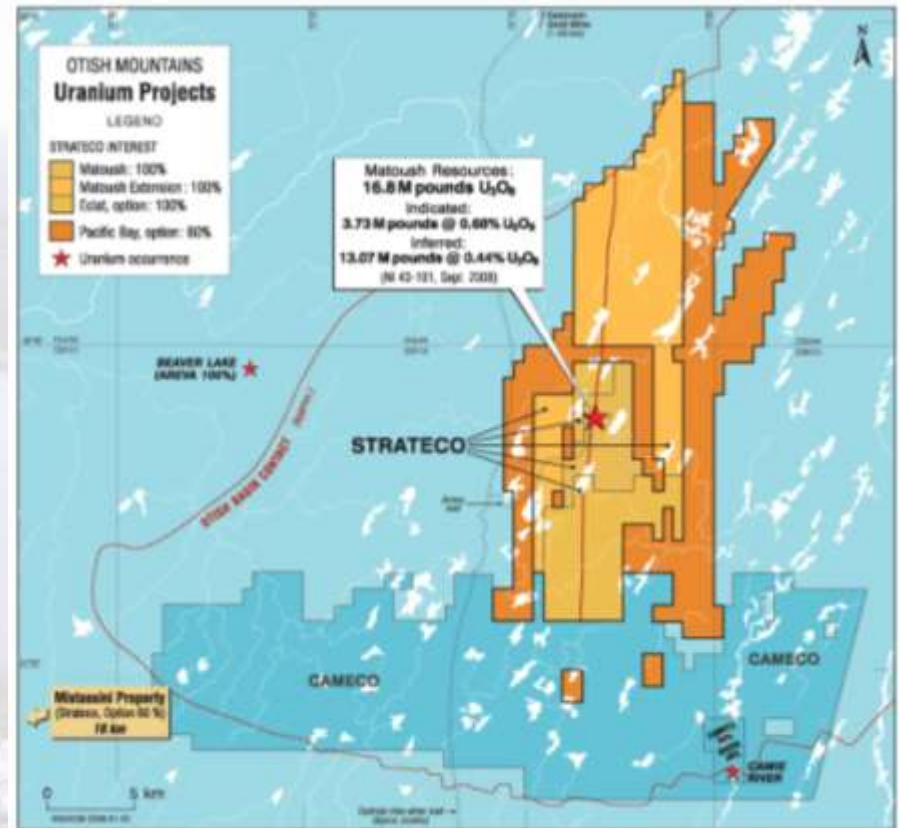


# PROJECT LOCATIONS





- Property covers 312 km<sup>2</sup>, 25 km strike length. Matoush structure VLF and drilling defined over 10 km.
- The new NI 43-101 resource estimate completed in September 2009 shows a 100% increase in indicated mineral resources in 1 year and significant increase in grade at Matoush.
- Indicated Resources are estimated to total 436,000 tonnes grading 0.78% U<sub>3</sub>O<sub>8</sub> containing 7.46 million pounds U<sub>3</sub>O<sub>8</sub>. Inferred Resources are estimated to total 1.16 million tonnes grading 0.50% U<sub>3</sub>O<sub>8</sub> containing 12.78 million pounds U<sub>3</sub>O<sub>8</sub>. The Mineral Resources are contained within three zones: AM-15, MT-22 and MT-34.
- Next 2 years, 120,000 metres of surface drilling to delineate a potential 60 M pounds.





# MATOUSH MINERAL RESOURCES

	Tonnes (x 1,000)	Grade (% U <sub>3</sub> O <sub>8</sub> )	Pounds U <sub>3</sub> O <sub>8</sub> (x 1,000)
<b>INDICATED</b>			
AM-15	262	0.70	4,039
MT-34	174	0.89	3,420
<b>TOTAL INDICATED</b>	<b>436</b>	<b>0.78</b>	<b>7,458</b>
<b>INFERRED</b>			
AM-15	33	0.34	249
MT-22	822	0.53	9,526
MT-34	302	0.45	3,003
<b>TOTAL INFERRED</b>	<b>1,157</b>	<b>0.50</b>	<b>12,777</b>

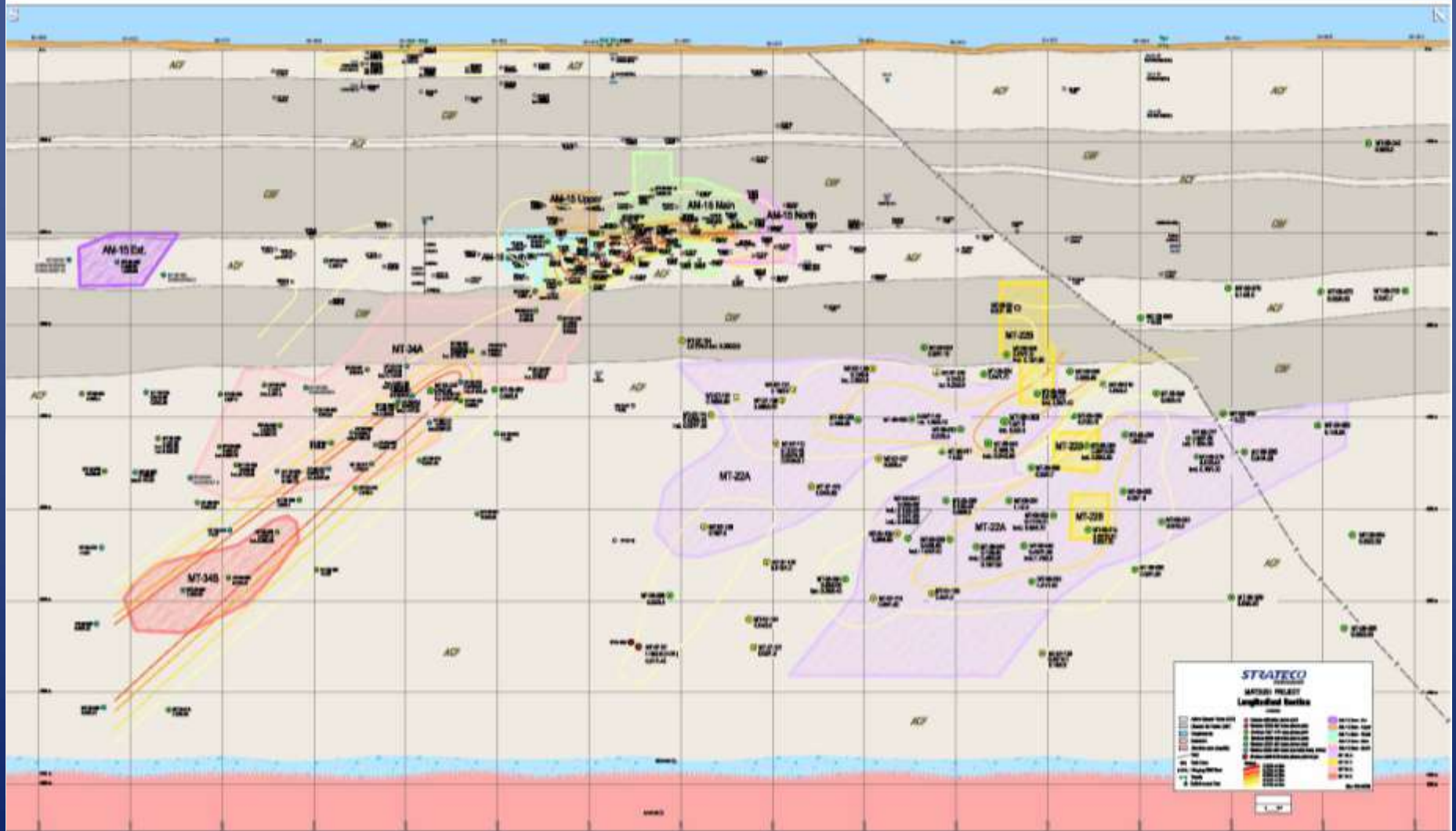
Notes :

**September 2009**  
**Scott Wilson RPA**

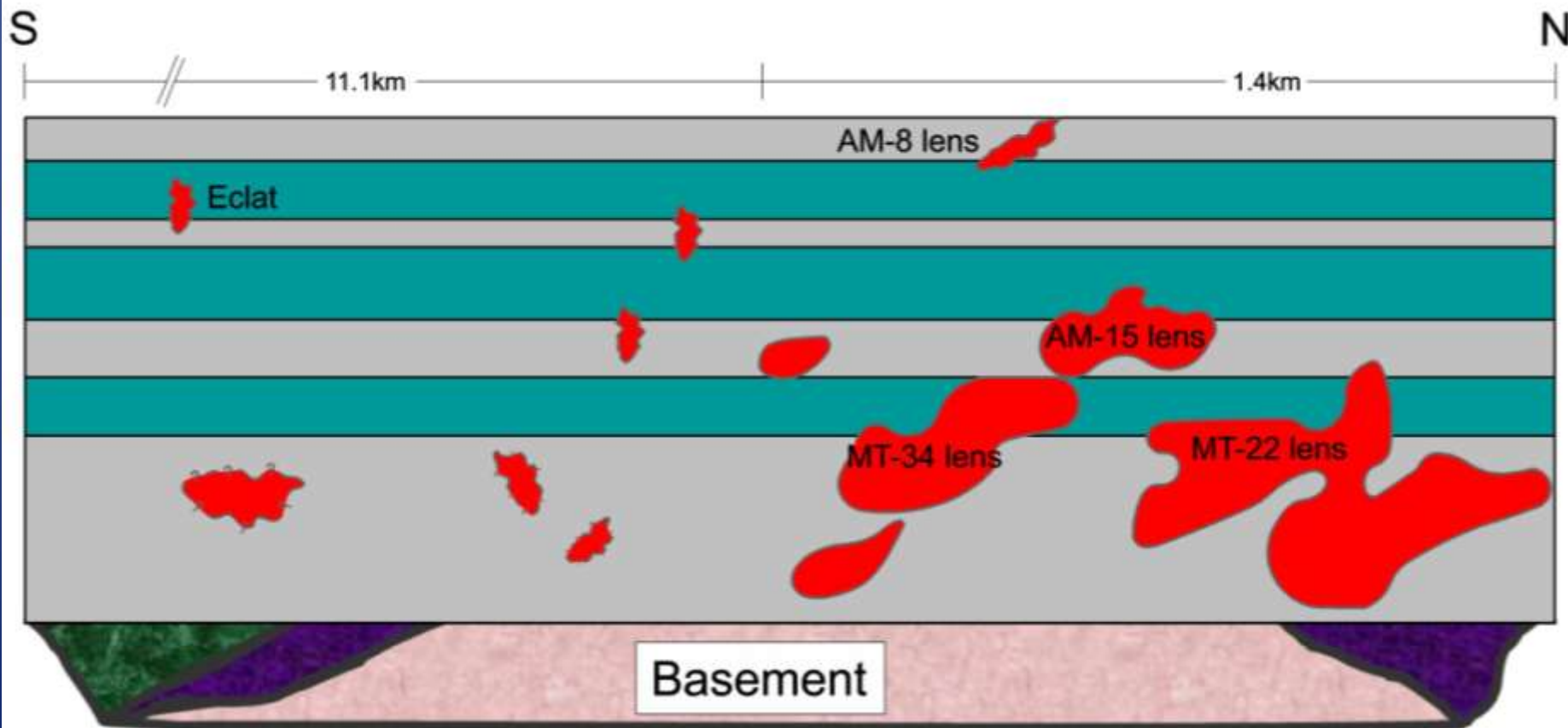
1. CIM Definition Standards have been followed for classification of Mineral Resources.
2. The cut-off grade of 0.1 % U<sub>3</sub>O<sub>8</sub> was estimated using a U<sub>3</sub>O<sub>8</sub> price of US\$75/lb and assumed operating costs.
3. High U<sub>3</sub>O<sub>8</sub> grades were cut to 9%.
4. The Mineral Resource estimate uses drill hole data available as of September 1, 2009.
5. Mineral Resources are not Mineral Reserves and do not have demonstrated economic viability.
6. Totals may not sum correctly due to rounding.



# MATOUSH LONGITUDINAL SECTION



# MATOUSH LONGITUDINAL SECTION (schematic view)





# SCOPING STUDY

## 1. ORE PRODUCTION AND RECOVERED METAL

FEBRUARY 2010

Year	Mill Feed (x 1,000) Tonnes	Grade % U <sub>3</sub> O <sub>8</sub>	Recovered Metal 97.6% (x 1,000 pounds) U <sub>3</sub> O <sub>8</sub>
1	169.8	0.639	2,334
2	240.6	0.400	2,073
3	262.7	0.461	2,605
4	262.2	0.522	2,947
5	249.5	0.561	3,011
6	224.1	0.496	2,392
7	239.6	0.468	2,413
<b>TOTAL</b>	<b>1,648.6</b>	<b>0.501</b>	<b>17,775</b>

## 2. REVENUE

The price scenario was established by SD Energy with a long term price from US\$60.00 to US\$90.00 per pound U<sub>3</sub>O<sub>8</sub> over the life of the project with an evaluation price of US\$75.00 per pound U<sub>3</sub>O<sub>8</sub>.

The exchange rate US\$/CAN\$ is 0.85.

Transport to smelter in North America is \$0.10 per pound.

Royalty 2%.

	(X 1,000) CAN\$
Gross Revenue	1,568,363
Transport to smelter	1,777
Royalty	31,332
NSR Gross Revenue after the Royalty	1,535,253



# SCOPING STUDY

## 3. OPERATING COSTS

Mining	\$91.64/T milled	Maintenance	\$24.86/T milled
Process	\$92.74/T milled	Site services	\$32.68/T milled
Power (generators)	\$35.77/T milled	G&A	\$22.43/T milled
<b>Average Operating Cost: \$300.12/T milled</b>			
<b>CAN\$27.84/pound</b>		<b>US\$23.66/pound</b>	

## 4. OPERATING PROFIT

Year	(x 1,000) CAN\$	Year	(x 1,000) CAN\$
1	131,819	5	189,170
2	107,096	6	136,345
3	153,437	7	139,824
4	182,793		
<b>Total Operating Profit: CAN\$1,040,484,000</b>			

\* The scoping study is preliminary in nature, it includes inferred mineral resources that are considered too speculative geologically to have the economic considerations applied to them that would enable them to be categorized as mineral reserves, and there is no certainty that the preliminary assessment will be realized.

\* Mineral resources that are not mineral reserves do not have demonstrated economic viability.



# SCOPING STUDY

## 5. CAPITAL COSTS

	(x 1,000 CAN\$)	(x 1,000 CAN\$)
<b>Direct Capital Costs</b>		191,009
Mine	32,466	
Process	143,146	
Infrastructure	15,398	
<b>Indirect Capital Costs</b>		48,568
<b>Contingency</b>		52,273
<b>Capital Spare</b>		980
<b>Before Start Up</b>		<b>292,830</b>
<b>Sustaining Capital (6 years)</b>		19,126
<b>Closure</b>		30,000
<b>Mine Life Capital Costs</b>		<b>341,955</b>

## 6. FINANCIAL

**Internal Rate of Return  
before Tax: 41.5%**

NET PRESENT VALUE (NPV) before Tax	
Discount Rate %	(x 1,000 CAN\$)
5	475,550
8	377,640
10	323,530
15	218,070



# SENSITIVITY

Grade	% U3O8	NPV
	0.501 %	\$ 323,530
0.80	0.401%	\$ 148,460
0.90	0.451%	\$ 235,990
1.00	0.501%	\$ 323,530
1.10	0.551%	\$ 411,060
1.20	0.601%	\$ 498,600

Opex	Millions	NPV
	\$ 494,800	\$ 323,530
0.80	\$ 395,800	\$ 380,480
0.90	\$ 445,300	\$ 352,000
1.00	\$ 494,800	\$ 323,530
1.10	\$ 544,200	\$ 295,050
1.20	\$ 593,700	\$ 266,580

Price	US\$/lb	NPV
	75.00	\$ 323,530
0.67	50.00	\$ 31,700
0.80	60.00	\$ 148,260
1.00	75.00	\$ 323,530
1.07	80.00	\$ 381,890
1.14	85.50	\$ 446,220

Capex	Millions	NPV
	\$ 342,000	\$ 323,530
0.80	\$ 273,600	\$ 376,950
0.90	\$ 307,800	\$ 350,240
1.00	\$ 342,000	\$ 323,530
1.10	\$ 376,200	\$ 296,820
1.20	\$ 410,300	\$ 270,110

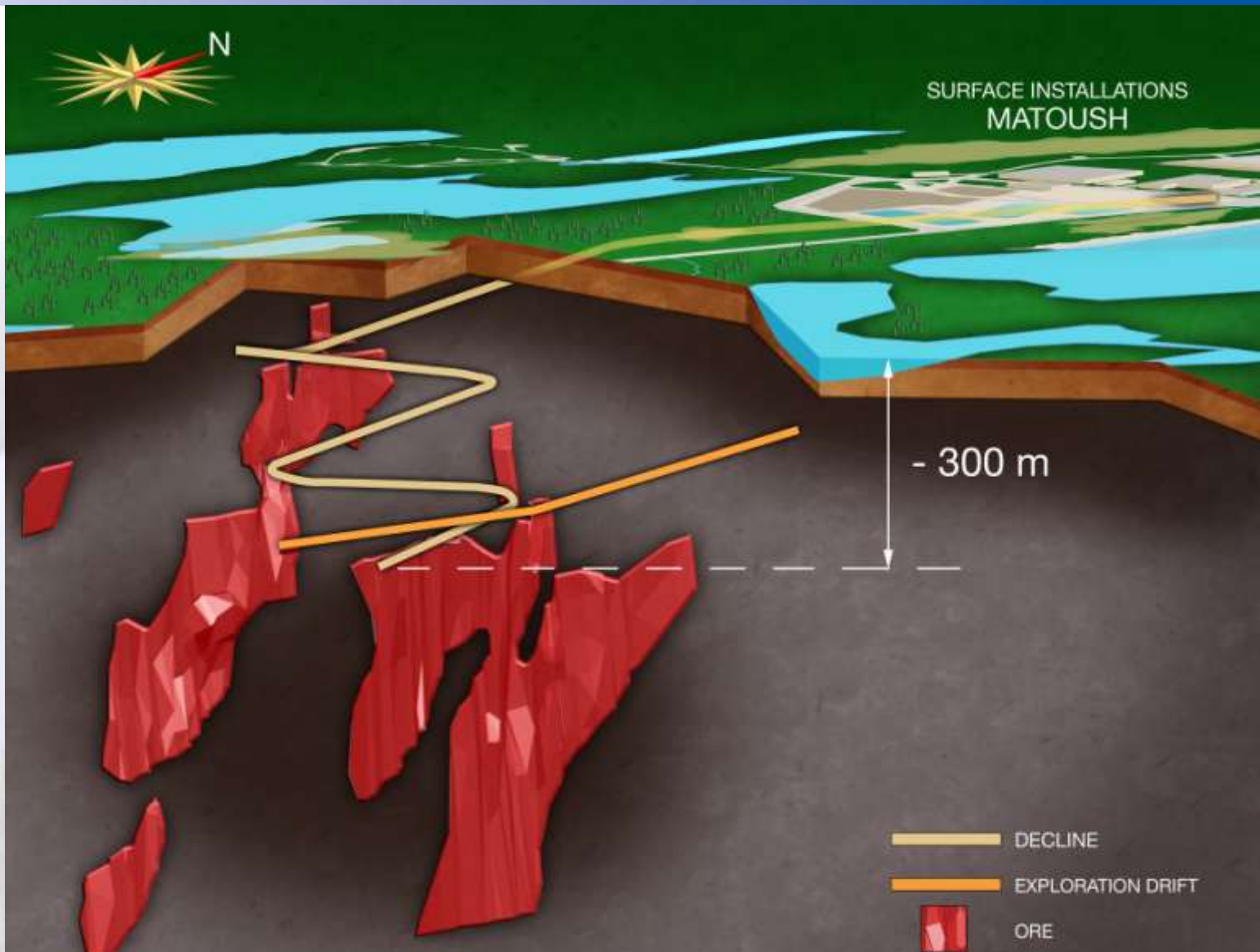


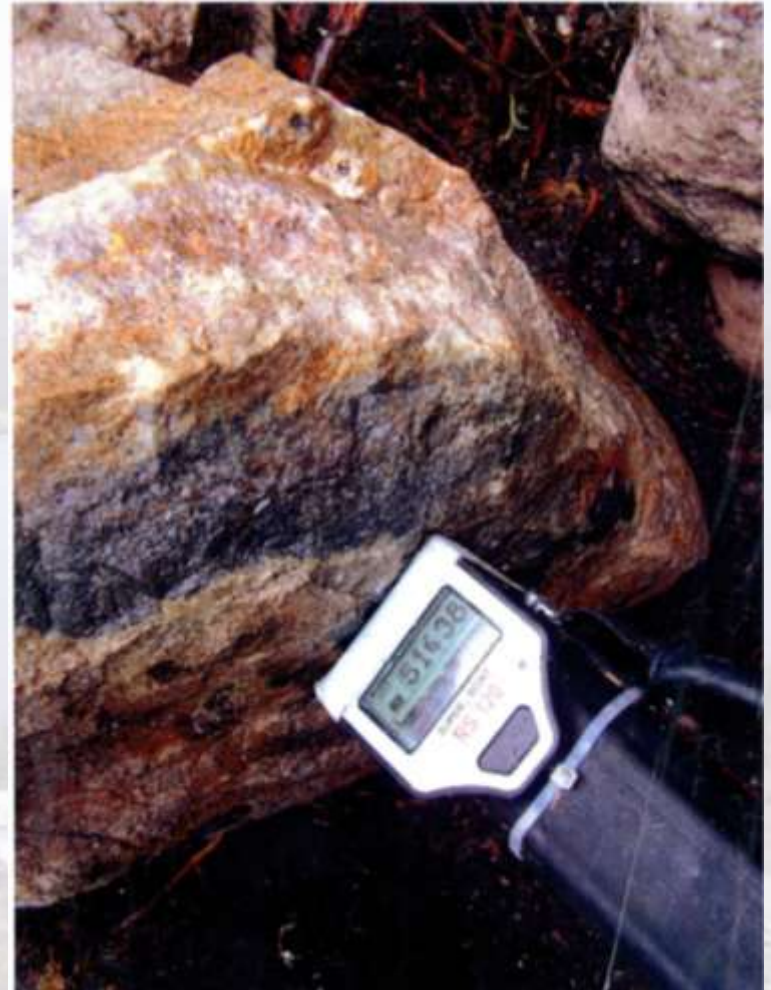
# URANIUM PRODUCERS

Companies	Production (million pounds)		Shares outstanding	Share price	Market Cap (x 1,000 \$)	Average Production Costs
	2008	2009				
Denison Mines (DML)	1.6	1.3 to 1.5	339 720 000	\$1.52	516,000	\$65/lbs
Paladin Energy (PDN)	1.7	2.7	717 000 000	\$4.06	2,911,000	\$25/lbs
Uranium One (UUU)	2.9	3.5	704 000 000	\$3.33	2,344,000	\$20/lbs



# PROPOSED RAMP DESIGN

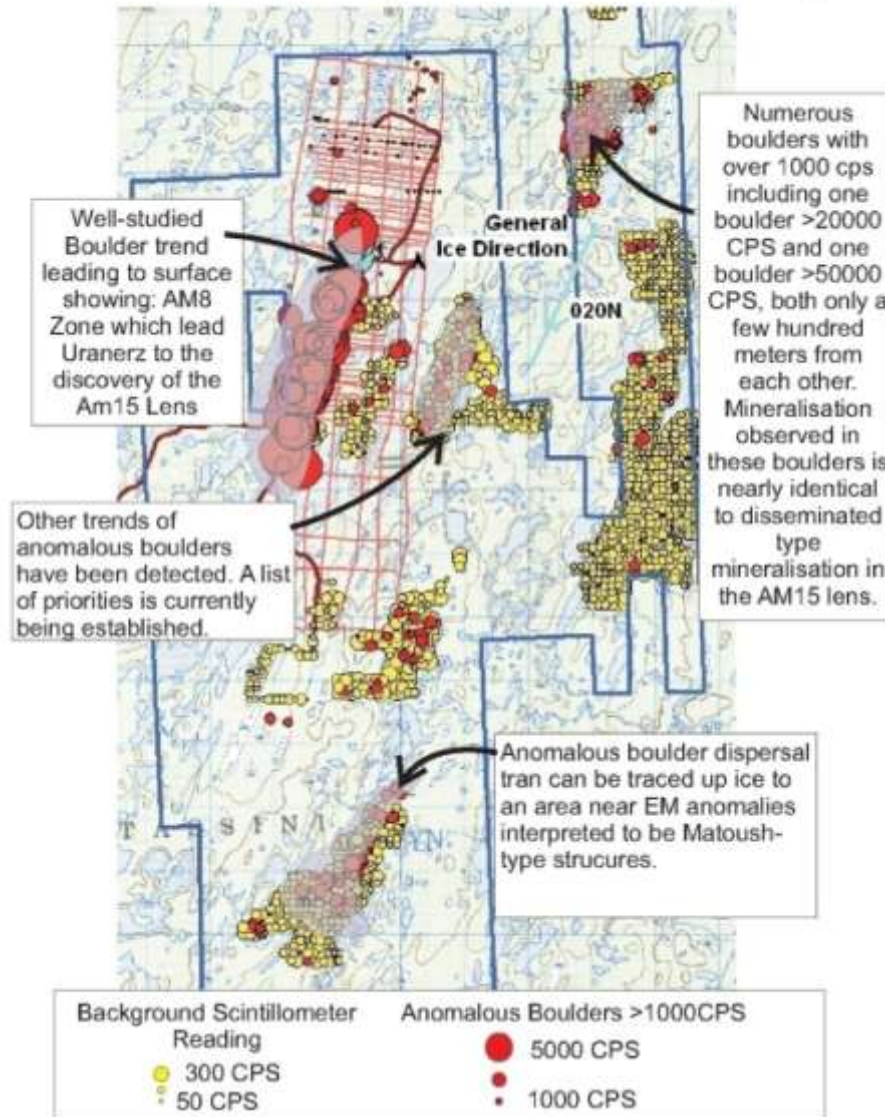






# EXPLORATION POTENTIAL & EROSION

## Matoush South : Exploration and Prospecting



# LIST OF ENVIRONMENTAL STUDIES & PROGRAMS



**ENVIRONMENTAL BASELINE STUDY**

- Archeology
- Aquatic
- Hydrology
- Wildlife
- Vegetation and Soil
- Surface Water and Sediment Quality
- Air and Climate
- Communication and Consultation
- Ecological Risk Assessment
- Human Health Risk Assessment
- Radiation

**ENVIRONMENTAL RAMP STUDY**

- Hydrogeology Study
- Geochemistry
- Development Ramp Water Treatment Plant
- Waste Water Plant
- Technological Risk Assessment
- COMPLETED

**STRATECO**

- Environmental Emergency Plan
- Environmental Protection Program
- Development Ramp Water and Final Effluent Monitoring Program
- Drinking Water Sampling Program
- Runoff Water Monitoring Program
- Waste Management Program
- Surface Water and Sediment Monitoring Program
- Aquatic Biota Monitoring Program
- Air Monitoring Program



# LIST OF HEALTH & SAFETY DOCUMENTS

## PROGRAMS

- ALARA
- Quality Assurance
- Employee Communications
- Training
- Industrial Hygiene
- Emergency Measures
- Radioprotection
- Relations with the Community
- Health at Work
- Safety at Work
- Industrial Security
- Documentation Management

## PROCEDURES

- In Case of Accidents
- Radioprotection Measures
- Sampling
- Fire and Forest Fire
- Prospection
- Satellite Calls
- General Rules of the Camp's installations
- COMPLETED

## FORMS

- Health and Safety Meeting
- First Aid**
  - Health Team
  - First Responder
  - First Aider
  - First Aid Kit Verification
  - Evacuation by Air of an Injured
- Event Notification
- Health at Work**
  - Summary Health Assessment
  - Medical Prescription
  - Observation and Evolution Notes
  - Consent on Influenza Vaccin
  - Narcotics Follow-up
  - Treatment Refusal
  - Etc.
- Thermoluminescent Dosimeter – Radioactivity**
  - Information on Ionizing Radiation (before exposure)
  - Personal Information Form – Dosimeter - Radioactivity
  - Personal Exposure Report
- Authorization to Gather, Communicate and Use Personal Data



# PROJECT SCHEDULE

Strateco Resources Inc.	Matoush project
-------------------------	-----------------

2009 — 2014 Project Schedule		2009				2010				2011		2012		2013		2014	
Description	Activities	Q1	Q2	Q3	Q4	Q1	Q2	Q3	Q4	D1	D2	D1	D2	D1	D2	D1	D2
Exploration/Geology	Surface Drilling																
	Geological Modeling & Resource Estimation			Rev.				Rev.		Rev.		Rev.		Rev.			
	Underground Drilling																
Management & Studies	Project Description																
	Exploration Ramp Design																
	Scoping Study							Rev.									
	Permitting	Exploration Ramp								Construction & Production							
	Feasibility Study																
Exploration Ramp Infrastructure	Access Road																
	Surface Installations																
Development & Construction	Portal and Exploration Ramp																
	Lateral Development																
	Production Ramp																
	Infrastructure Construction																
	Process Mill Construction																
Production	Commissioning & Start-Up																

Q Quarter     H Half



# SUMMARY

## TO BE SUCCESSFUL IN ANY INVESTMENT

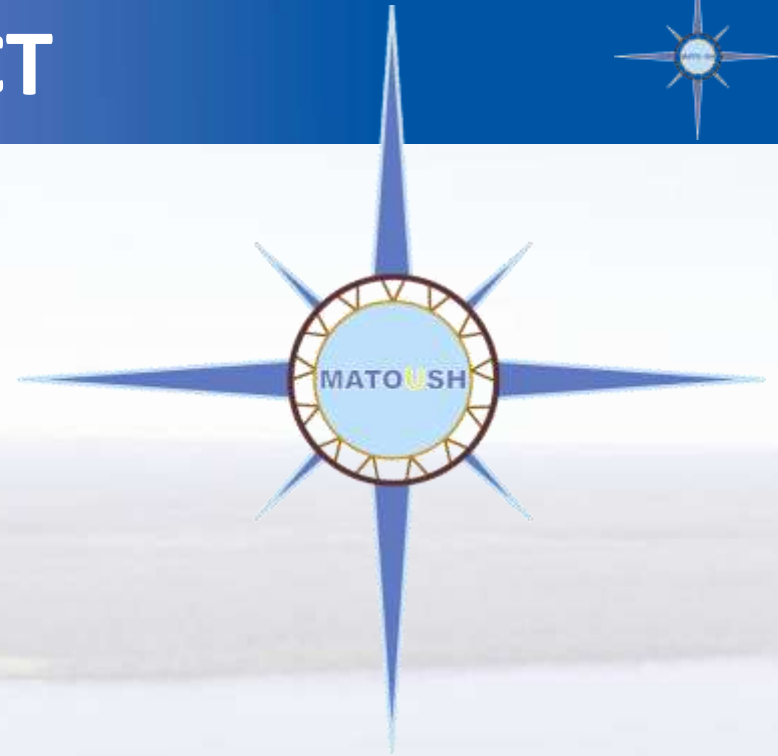
1. STRONG MANAGEMENT
2. EXCELLENT PROJECT
3. AGGRESSIVE INVESTOR RELATION PROGRAM

**THIS IS STRATECO RESOURCES (RSC)**



## **STRATECO** RESOURCES

---



Website: [www.stratecoinc.com](http://www.stratecoinc.com)

Toll Free: 1-866-774-7722

Telephone: 1-450-641-0775

Fax: 1-450-641-1601

Address: 1225 Gay-Lussac Street  
Boucherville, Quebec J4B 7K1  
CANADA